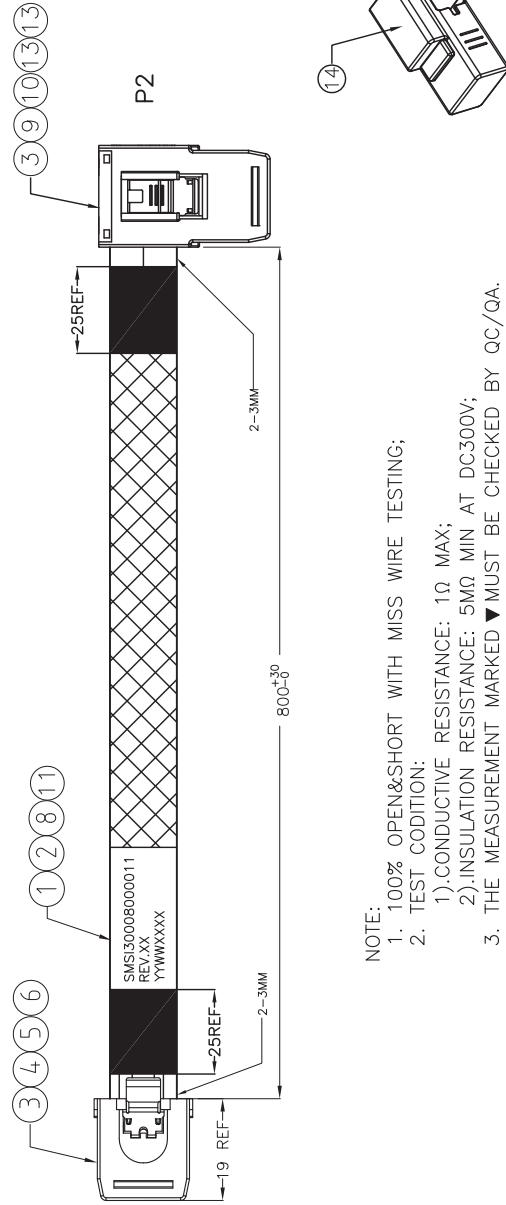
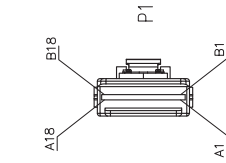
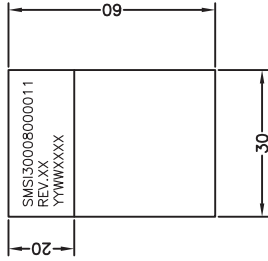


A B C D

# WIRING TABLE

P1	P2
A18	A18
B17	A17
B16	A16
B15	A15
B14	A14
B13	A13
B12	A12
B11	A11
B10	A10
B9	A9
B8	A8
B7	A7
B6	A6
B5	A5
B4	A4
B3	A3
B2	A2
B1	A1
A18	B18
A17	B17
A16	B16
A15	B15
A14	B14
A13	B13
A12	B12
A11	B11
A10	B10
A9	B9
A8	B8
A7	B7
A6	B6
A5	B5
A4	B4
A3	B3
A2	B2
A1	B1

## LABEL INFORMATION



- NOTE:
- 100% OPEN&SHORT WITH MISS WIRE TESTING;
  - TEST CODITION:
    - 1).CONDUCTIVE RESISTANCE: 1Ω MAX;
    - 2).INSULATION RESISTANCE: 5MΩ MIN AT DC300V;
  - THE MEASUREMENT MARKED ▼ MUST BE CHECKED BY QC/QA.
  - RoHS REGULATION: THIS CABLE ASSEMBLY PASSED "RoHS" COMPLIANT.
  - CABLE ASSEMBLY MEET SAS 6Gbps AND SAS 2.1 SPEC.

S/N	DESCRIPTION	ITEM NO.	QTY.
14	DUSR-PROOF FOR SFF-8087, HDPE, NATURAL	P-MSIPE-0006	2
13	INNER MOLDING FOR SFF8087 LEFT EXIT, BLK	P-MSIPE-0004	1
12	PLASTIC SHELL FOR SFF8087 LEFT EXIT, PBT, BLK	P-MSIPB-0002	1
11	ID LABEL, L60*W30MM	L-04-C-0039	1
10	LATCH FOR SFF-8087, SUS 301	OTEZ025A/SS=P	2
9	METAL CLIP FOR SFF8087 RIGHT EXIT, S301	M-MSISLOT-04	2
8	PLASTIC BRAID SLEEVE, Ø8MM, PET, BLACK	O-NB-S-0004	A/R
7	ACETATE TAPE, 25mm, BLACK	O-AT-S-0004	A/R
6	LATCH FOR SFF-8087 SHORT BODY, SUS 301	M-SATSLOT-01	2
5	OVER MOLD FOR SFF-8087, ABS+30%GF, BLACK	P-MSIAB-0002	2
4	INNER MOLD FOR SFF-8087, PE, BLACK	P-MSIPE-0003	2
3	PCB FOR SFF-8087, 4LAYER, AU15U"	P-MSI3015-05B	2
2	FLAT CABLE 30AWG, 0.8PITCH, GRAY, 4P	CAB-FLA-Y-4P-30PC-02	A/R
1	SAS CABLE, 30AWG, DERAN FOIL COLOR SILVER	CAB-MSI-D-30MN	A/R

**SANDER COMPUTER SYSTEME BH**  
 Müllersbaum 18 • 51399 Burscheid-Hilgen  
 Telefon 02174/676-0 • Telefax 02174/676-51 bis 54  
 E-Mail: scg@scsgmbh.de • www.scsgmbh.de

X2	REV.	ECR No.	RELEASE FOR PRODUCTION	DATE	BY	DATE
X1				02/25/15		02/25/15
TOLERANCE UNLESS OTHERWISE SPECIFIED .XX ± .005 X ± .3 FRACT ± 1/32° ANGULAR ± 1/2°			ITEM DESCRIPTION			
			Int. mSAS 36P TO Int. mSAS 36P/Left W/SB 30AWG 80CM CABLE ASSEMBLY, 6Gbps			
			ROHS COMPLIANT: YES			
			PART NO. SMSI30008000011			
			DRAWING NO. SMSI30008000011			
			MODEL FILE N/A			
			SCALE 1 OF 1			