



Rackmount Chassis

Rear View



Inside View



Front View



Standard



Option 1



Option 2

Features & Benefits

- Fully utilized space to support 24 x 2.5" hot-swap HDDs
- Versatile storage configuration with optional modular cages
- Optional chassis management board (CMB) for PWM fan, overheat & PSU alert functions
- Easy-assembly fan bar with anti-vibration design
- Optional SAS expander card (24-port) for storage expansion
- Tylersburg solution compliance

Specification

Model Name	• RM23424
M/B Form Factor	• Extended ATX (12" x 13"), CEB (12" x 10.5"), ATX (12" x 9.6")
Dimension (D×W×H)	• 660 mm × 430 mm × 88 mm • 26" × 16.9" × 3.5"
Drive Bay	Standard SKU • Hot-Swap HDD Tray : 2.5" x 24 (With 2 x SAS Expander Cards) Option 1 SKU • Slim ODD : 1 • Hot-Swap HDD Tray : 2.5" x 16 Option 2 SKU • External : 5.25" x 1, 3.5" x 1 • Hot-Swap HDD Tray : 2.5" x 12
PSU	• Form Factor : Single, Redundant • Watt : 820 W
Indicator	• 1 x Power Status LED, 1 x Fan Failure & Overheat Warning (Optional)
Front Control	• Power ON/OFF, Alarm Mute (Optional), System Reset, 2 x USB 2.0 Ports (Optional)
System Security	• Intrusion Switch
Cooling Fan	• Front : N/A • Middle : 3 x 80 mm (T=38 mm) hot-swap middle fans • Rear : Optional 2 x 40 mm rear fan
Slot Opening	• 3 x full height or 7 x low profile
Metal Thickness	• 1.2 mm
Net Weight (Chassis only)	• 10.3 Kg
Gross Weight (w/Packing)	• 14.18 Kg
Backplane	• Mini-SAS
Rear Window	• Low Profile or Standard
Front Bezel	• N/A
Cubic Feet	• 4.98
Container Info. (Single Packing)	• 20' : 258 • 40' : 522 • 40'H : 578



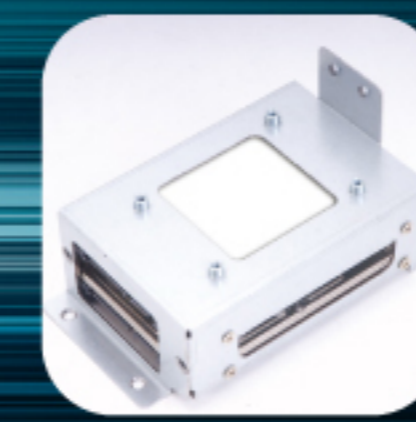
Optional cage for ODD + FDD or storage kits



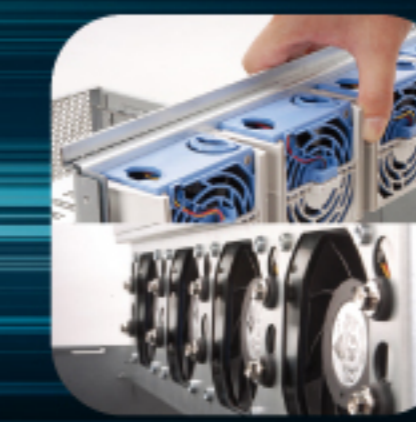
Optional cage for 4 x 2.5" HDDs + slim ODD or SK51102



Optional SAS expander board



Optional cage for 2 x Internal 2.5" HDDs



Easy-assembly fan bar with anti-vibration rubbers



Optional CMB board for PWM fan, overheat & PSU alert functions